



**WolvesFleet**  
We Save Lives and Prevent leakage of confidence



# HIGH POWER **DDS** CONVOY VEHICLE JAMMING SYSTEM

Model No. WF-VIP JAM**6**

## INTRODUCTION

Bomb Detonating and confidence leaking, resulting from Road-side Remote Control Improvised Explosive Device (RCIED) have been tremendous challenge in many parts of the world.

Wolvesfleet solutions—**WF-VIP JAM6**, High Power DDS Convoy Jamming System, implementing the most effective and reliable RF jamming technology and equipped with a fully-integrated broadband jamming system.

**WF-VIP JAM6** can cover, continuously and simultaneously, all the RF communication Frequencies 20MHz-6000MHz. It will be the best solution to defend VIP convoy for vehicle mounted and some other big area jamming quickly to be set up, like military base, important sports events and international summits etc.

**WF-VIP JAM6**, full portable multi-band DDS Jamming system, is designed with a ruggedized trolley type case, highly mobility. This device is configured with 6 different jamming modules, the jamming frequency can be more than 20Bands. Six jamming frequency modules can be up to 600 watt output power maximum.

The **WF-VIP JAM6** is very easy to be installed and operated. The device can be powered by AC mains or a suitable DC power source. The general design of the system meets military requirements and international quality standards.





## ADVANTAGES OF THE WF-VIP JAM6

- ▶ High-power portable multi-band jammer.
- ▶ Upgraded jamming signal source (DDS technology) to provide utmost efficiency.
- ▶ Field programmability for rapid adjustment frequency and output power.
- ▶ Fully modular compact design with extremely high efficient cooling system provide very good system stability even in hard climatic conditions. Also easy for maintenance, repair and upgrade.
- ▶ Jam up to six different jamming modules simultaneously, and cover up to 20 different frequency bands.
- ▶ Each module with LCD display to show its working frequency ,output power and etc.
- ▶ Increased total RF output power up to 600 watts.
- ▶ Equipped with a wired remote control unit. The operator can ON/OFF each module through the wired remote controller.
- ▶ Fully portable trolley-type case. Easy to be carried.
- ▶ Supplied by AC mains or DC power source.
- ▶ Backup battery system or generator system can be optional.
- ▶ The jamming system with an active smart cooling system in a continuously cycle working.
- ▶ Based on our general design, we can further customize our systems to be client-specified scenarios both for military and civil applications in order to provide the best individual solution.

## APPLICATION

Bomb disposal squads, VIP protection, military security forces, anti-terrorism units, anti-drug units, Border control units, checkpoint personnel, etc, such types of law enforcement personnel who benefit greatly from the deployment of any of these best-in-class portable RF jamming solutions. They can conduct the law enforcement process more effectively to reduce the chance that the criminals leak the information. And some important sport events, international summits, and so on.



## TECHNICAL SPECIFICATION

Based on its modular design and configuration our digital jammer can be easily operated, upgraded, serviced, repaired and adapted to its required use.

Digital Jammer modules can be changed easily and quickly just as changing the mobile phone battery. Different jamming frequency bands can be configured as the customers required immediately.

ADVANTAGES OF THE WF-VIP JAM6L		
RF Frequency Band(MHz)	Application	RF Output Power (Watt)
20-100	HF, Radio Control Toys; Car Alarms	60
135-175/240-280	Walky-talky ( VHF )	50/100
310-400	Remote Control ,Walky-talky ( UHF300 )	50/100
400-470	Cellular NMT;Walky-Talky ( UHF400 ); Cellular CDMA450;Car Alarm; Remote Control	50/100
725-775	LTE4G	50/90
850-895;/925-960	Cellular CDMA800/GSM900, UHF800	100
TOTAL RF POWER		360/550Watt

ADVANTAGES OF THE WF-VIP JAM6H		
RF Frequency Band(MHz)	Application	RF Output Power (Watt)
1520-1580	GPS & Satellite; Thuraya; Iridium; Odyssey; GlobalStar; Inmarsat; Aces; Elipso	50/70
1805-1880/1920-1990	Cellular HGSM1800,GSM1900/ PHS	60/100
2110-2170	Cellular UMTS / WCDMA,CDMA2000 ( 3G )	60/100
2620-2690	LTE,4G	40
2400-2500	WLAN & Bluetooth & WiFi2.4G	40
3400-3600	WiMax;Bluetooth	10
TOTAL RF POWER		260/360Watt

Frequency Range	20-3600MHz
Total RF Power	260-360Watt, Max: 600Watt
Jammer Module Number	6
Channel Frequency Number	15Bands, Max: 24Bands
Cooling System	Systematic Smart Cooling System
System Protection	VSWR, Over-voltage, Over-current,
Jamming Source	Digital Signal Source Synthesize Technology Adjust Frequency and Output Watt
Remote Control	Full System Operation Control With Battery Led display
Antenna Type	High Gain Omni directional Antennas
Number of Antennas	6
External Battery	35AH/24-28VDC
Jammer Module	Each Jammer module with antenna can be used as a single jammer. All modules are controlled separately.
Jammer Size	63×49.2×35.2cm
Jamming System Weight	Approx.36kg
Operating Temperature Range	-35°C~+80°C
Operating Humidity	Up to 80%

# EQUIPMENT STRUCTURE AND OPERATING PRINCIPLES

## MACHINE BODY

**WF-VIP JAM6** adopts DDS technology, fully sweeping the jamming frequency bands so that it results in a more efficient jamming and more shielding coverage. Enclosed with American Mil-spec Case, dustproof, shockproof and drop-resistance.

Module design makes easy maintenance. Any damaged module can be took off and changed easily. It will not interfere the other modules' normal working.





## CHARACTERISTIC OF JAMMER MODULES

Each module is designed with three indication lights, to show Power, Run and Alarm (Antennae VSWR feedback status).

Each module is with LCD display to indicate the working frequency, output power and etc.

Each Module is designed with 232 Com Port and USB cable, connected to the computer. Frequency bands and output power can be adjusted, and the working status can be monitored through this software.



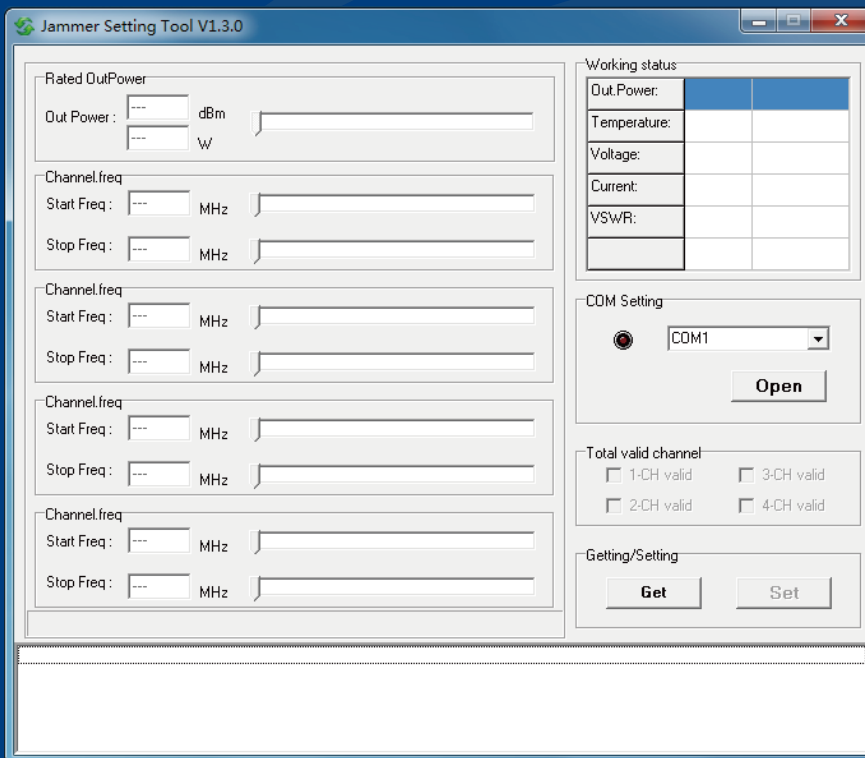
## REMOTE CONTROLLER

**WF-VIP JAM6** is designed with a wired remote control unit, facilitating the operator to manage each module in any situation. This remote control unit can also display external battery level as well as built-in power supplies' working status.



## DDS MODULE SOFTWARE INTERFACE

DDS software interface is quite simply. The operators just move the mouse and then he can set up working frequency bands and output power of the modules. Each module can jam up to 4 channels at most.



## BIGGEST ADVANTAGE OF APPLICATION

**WF-VIP JAM6** can be portable use and vehicle mounted, which its biggest advantage in the application. Two units of **WF-VIP JAM6** can combine full frequency bands installed in the vehicle, equipped with vehicle mount antennae as required.



## BATTERY TECHNICAL PARAMETER

To warranty the safe operation of the equipment, Lithium Iron Phosphate battery has been selected. It is the most secure battery among the global large capacity batteries currently.

## EXTERNAL BATTERY SPEC

Item	Model	RFE-8F35
1	Voltage	27V
2	Internal Resistance	24m $\Omega$
3	Size	260mm(L)* 125mm*(W)168mm (H)
4	Recharge	0.2C
5	Discharge	1C
6	Weight	8Kg
7	DC Charger	INPUT:100-230AC, OUTPUT:29.2V/5A DC



# Wireless Explosion Prevention Expert



**WolvesFleet**

We Save Lives and Prevent leakage of confidence

WOLVESFLEET TECHNOLOGY CO., LIMITED

Add: 4th Floor, R&D Building, Dacheng Industrial Park, Jihua Road, Buji, ShenZhen, China

Tel: 86-755-33620231 Fax: 86-755-33620232 [www.wolvesfleet.com](http://www.wolvesfleet.com)

All copyrights are reserved by WOLVESFLEET. Without permission, mustn't be Copied and reproduced. Once discovered, legal liability will be held.