



WolvesFleet

We Save Lives and Prevent leakage of confidence

PHOTO-FRAME STYLE SMART SIGNAL DETECTIVE JAMMER

Covert, Elegant, Power saving, Environmentally friendly, and Smart



CELLPHONE SIGNAL DETECTIVE JAMMER Model No. **WF-DJ7**

INTRODUCTION

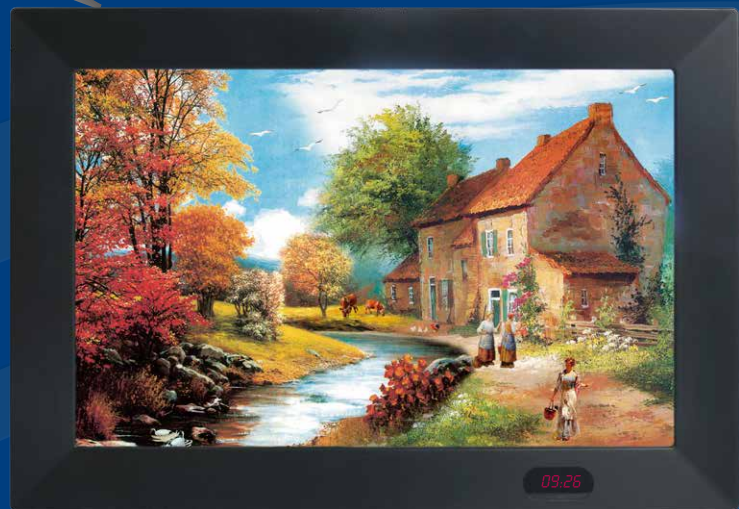
The current cellphone jammers work with continuous emission of high power RF interference signals, which is main disadvantage to some degree. Firstly, people are continuously exposed to high power RF radiation for a long time, which is not environmentally friendly. Secondly, Such jammers will keep interfering the signals even while not in use, which is not smart. Conducting a systematic study, a smart environmental detective cellphone jammer **WF-DJ7** is designed based on the above two problems. When the mobile phone is incoming or outgoing, **WF-DJ7** interferes the signals between the mobile phone and BTS to prevent the phone from communicating with the outside, otherwise the device will be in sleep mode. **WF-DJ7** plays a smart shielding role.



AC Jack110-220V



IR Remote Control



LED lights for Working



RS232 computer Cable

APPLICATION

WF-DJ7 is designed mainly used for indoor cellphone signal detection and shielding, such as meeting rooms, border control units, Border Patrol and Drug Enforcement, Customs, House, Churches, Courts, Theaters, Office, classroom. checkpoint personnel, Hospitals, Recording Studios, Banks, Contract Tendering Rooms, Testing Facilities, Security Services, Military Units, Secret Services, News Conference Scene, Libraries, Museums, Prisons and so on.



RIGHT SIDE

ADVANTAGES OF THE WF-DJ7

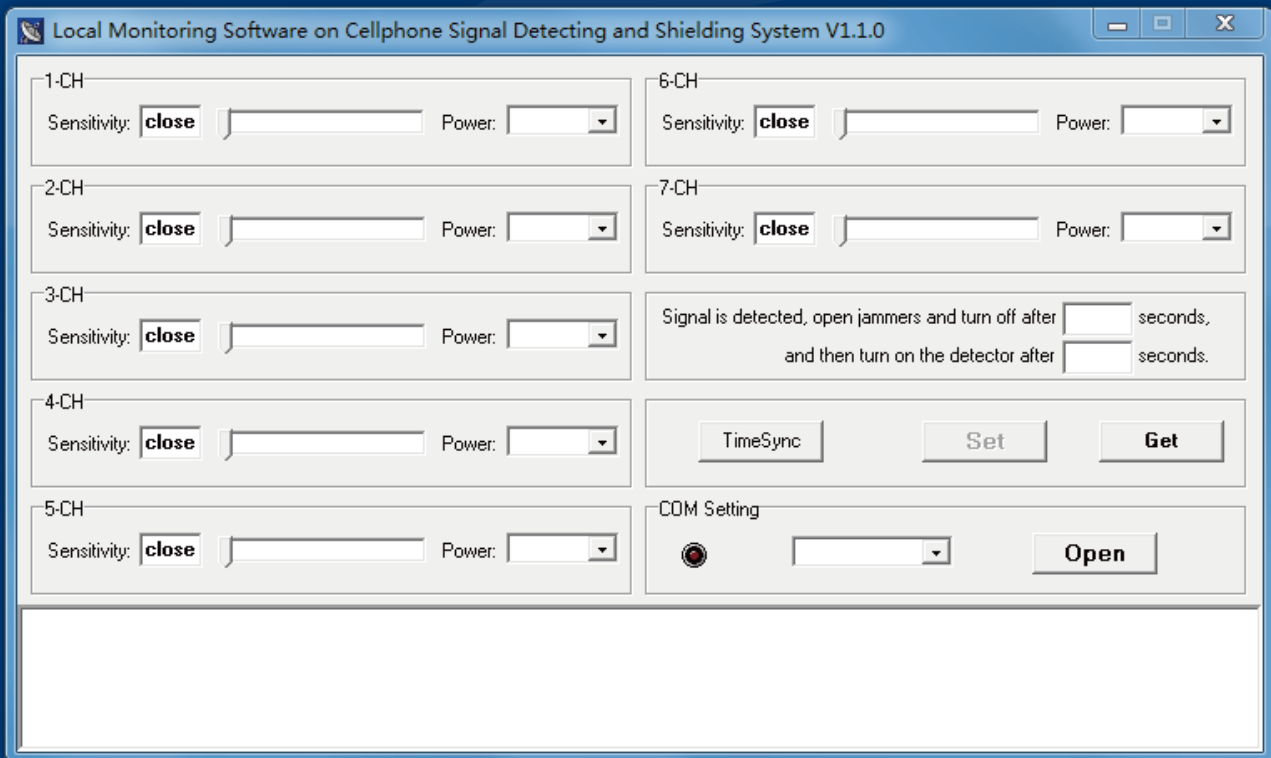
- ▶ Photo Frame Style, Noble and Elegant Design
- ▶ Working in continuous detection and jamming mode make a lower power consumption.
- ▶ Shielding function activated smartly. Environmentally friendly.
- ▶ Support RS232 Com port, controlled by the computer.
- ▶ Output power of each band can be adjusted by computer RS232 port as required, and shielding range can be regulated.
- ▶ Detective range can be up to 30 grades optional.
- ▶ Infrared remote control available to ON/OFF the device in a range of 0-10M.
- ▶ Setting time to shielding the signals.
- ▶ With internal antennae. Highly covert and wall mounted. It can be looked completely like a photo frame hung on the wall. Photo frame can be selected as required.
- ▶ With LED Light to display device activated and indicate the current time.
- ▶ With separate detecting and shielding LED light for each band. (Blue light for Detecting, Red light for shielding.)

TECHNICAL SPECIFICATION

Jamming frequency bands (up to 7 different frequency bands can be optional, applied for all the worldwide)			
American Market			
Band	Frequency Band	Average Output Power	Channel Output Power
CDMA800	850-894MHz	35dBm	3 Watt
GSM1900	1920-1990MHz	32dBm	2Watt
3G/CDMA2000	2110-2170MHz	32dBm	2Watt
4G/LTE700	725-770MHz	31dBm	3Watt
4G/LTE2300	2345-2400MHz	31dBm	2Watt
2.4Ghz WiFi, Wlan, Buletooth	2400-2500MHz	31dBm	2Watt
Europe, Middle East Market			
Band	Frequency Band	Average Output Power	Channel Output Power
GSM900	925-960MHz	35dBm	3Watt
DCS/GSM1800	1805-1880MHz	32dBm	2Watt
3G/WCDMA	2110-2170MHz	32dBm	2Watt
4G/LTE800	791-820MHz	35dBm	2Watt
4G/LTE2600	2620-2690MHz	31dBm	2Watt
2.4Ghz WiFi, Wlan, Buletooth	2400-2500MHz	31dBm	2Watt
Optional	<ul style="list-style-type: none"> • Satellite communication systems • Aces Odyssey GPS • Thuraya Iridium Elipso Inmarsat GlobalStar • CDMA450 Cell phone System 		
Detecting Up Link Frequency bands	American	CDMA800: 824-849MHz, GSM1900: 1805-1880MHz, 3G/CDMA2000: 1710-1785MHz, 4G/LTE700: 698-716MHz, 4G/LTE2300: 2345-2400MHz, 2.4Ghz WiFi, Wlan, Buletooth: 2400-2500MHz	
	Europe	GSM900: 890-915MHz, DCS/GSM1800: 1710.2-1784.8MHz, 3G/WCDMA: 1920-1980MHz, LTE800: 4G/832-862MHz, 4G/LTE2600: 2500-2570MHz, 2.4Ghz WiFi, Wlan, Buletooth: 2400-2500MHz	
Ripple in Band: $\leq \pm 1\text{dB}$		Outband Rejection: 60dBc	
Detecting Sensitivity: -85dBm. Support software adjustMent. 30 different grades optional.			
Output Power: 2-3W/band, total output power up to 15W			
Detcting Range: 1-25M (Up to 100m for GSM system)			
Jamming Range: Up to 1-50M (Still determined by the local signal strength)			
Antennae Type: internal antenna of 3dBi			
Power Supply: 110/220AC	Power Consumption:	Working Temperature: -20~+70°C	
Dimension: 660x 460 x 78mm	Humidity: 5~80%	Weight: 2.5kg	
Complete Accessories: Power Cable, RS232 computer Cable, IR Remote Control			
Systematic Function			
Programing mode	Detecting-Jamming-Sleeping-Cycling		
Shielding time(every time)	0-300 seconds optional, factory default by 100 seconds		
Longest continuous shielding	250 seconds(each second stepping)		
Detective Sleep time	0-60seconds optional, factory default by 20seconds.		

MONITORING SOFTWARE SYSTEM INTERFACE

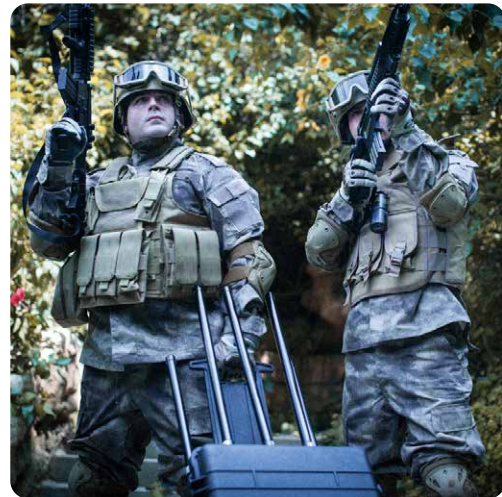
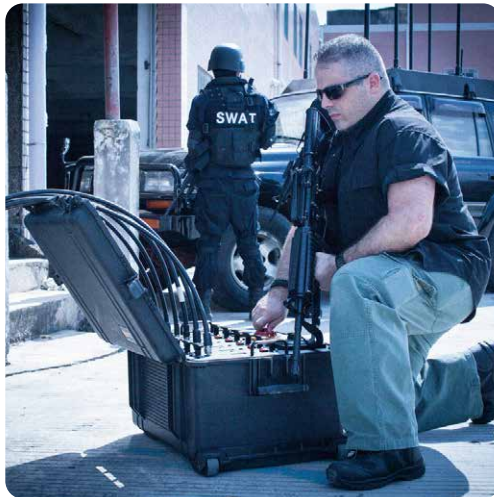
Quick and simple to enter the software interface. Easy to be operated. Just to move your mouse to regulate each channel's sensitivity to adjust the detective range, and each channel's output power to control the desired shielding range. The Jammer's shielding interval time can also be set. User friendly.



NOTE:

- ▶ Try to put the jammer away from metal materials to make sure the jamming performance won't be affected.
- ▶ The shielding range varies from the local signal strength.
- ▶ Don't put the jammer into the water or fire to avoid using in the bad Condition like over-wet, over-hot, high voltage and high magnetism.
- ▶ Any sealed mark on the machine tore is invalid.

Wireless Explosion Prevention Expert



WolvesFleet

We Save Lives and Prevent leakage of confidence

WOLVESFLEET TECHNOLOGY CO., LIMITED

Add: 4th Floor, R&D Building, Dacheng Industrial Park, Jihua Road, Buji, ShenZhen, China

Tel: 86-755-33620231 Fax: 86-755-33620232 www.wolvesfleet.com

All copyrights are reserved by WOLVESFLEET. Without permission, mustn't be Copied and reproduced. Once discovered, legal liability will be held.