



WolvesFleet
We Save Lives and Prevent leakage of confidence



HIGH-POWER PORTABLE **DDS** MULTI-BAND JAMMING SYSTEM

Model No. WF-VIP JAM8



APPLICATION

Bomb disposal squads, VIP protection, Special Police (S.W.A.T), military security forces, bomb squads, anti-terror units, anti-drug units, border control units, checkpoint personnel, these types of law enforcement personnel who benefit greatly from the deployment of any of these best-in-class portable RF jamming solutions.

They can conduct the law enforcement process more effectively to reduce the chance that the criminals leak the information.



TECHNICAL SPECIFICATION

Based on its modular design and configuration our digital jammer can be easily operated, upgraded, serviced, repaired and adapted to its required use.

Digital Jammer modules can be changed easily and quickly just as changing the mobile phone battery. Different jamming frequency bands can be configured as the customers required immediately.

RF Frequency Band(MHz)	20-100MHz 50W 27MHz, 35MHz, 41MHz, 72MHz toys and HM remote control	
	100-300MHz 50W Low-power transmitters	
	300-500MHz 50W Walky-Talky, 315/433 Car remote control	
	800-1000MHz 50W Cellular CDMA,GSM	
	1800-2000MHz 50W DCS, Cellular 4G	
	2000-2200MHz 50W Cellular 3G	
	2400-2500MHz 20W WIFI, Bluetooth, WLAN	
	2500-2700MHz 40W Cellular 4G	
	Total RF Power	360W
	Jammer Module Number	8
Jamming Frequency Bands Number	more than 20 Bands	
Cooling System	Systematic Smart Cooling System	
System Protection	VSWR, Over-voltage, Over-current,	
Jamming Source	Direct Digital Synthesize Technology	
Remote Control	Full System Operation Control	
Antenna Type	High Gain Omnidirectional Antennas	
Number of Antenna	8	
Battery Back Up Capacity	50AH/24-28VDC	
Modular Design	Each Jammer module with the antenna can be used as a single jamming All modules can be controlled individually .	
Size	63 x 49.2 x 35.2cm	
Weight	about41.62kg	
Operating Temperature Range	-35°C ~+80°C	
Operating Humidity Range	Up to 80%	

MACHINE BODY

WF-VIP JAM8 adopts DDS technology, fully sweeping the jamming frequency bands so that it results in a more efficient jamming and bigger shielding coverage. Enclosed with American Mil-spec Case, dustproof, shockproof and drop-resistance.

Modular design makes easier maintenance. Damaged modular can be took off and changed easily. It will not interfere the other modules' normal working.





CHARACTERISTIC OF JAMMER MODULES

Each module is designed with three indication lights, to show Power, Run and Alarm (Antennae VSWR feedback status).

Each module is with LCD display to indicate the working frequency, output power and etc.

Each Module is designed with 232 Com Port and USB cable to connected to the computer. Frequency bands and output power can be adjusted, and the working status can be monitored through this software.



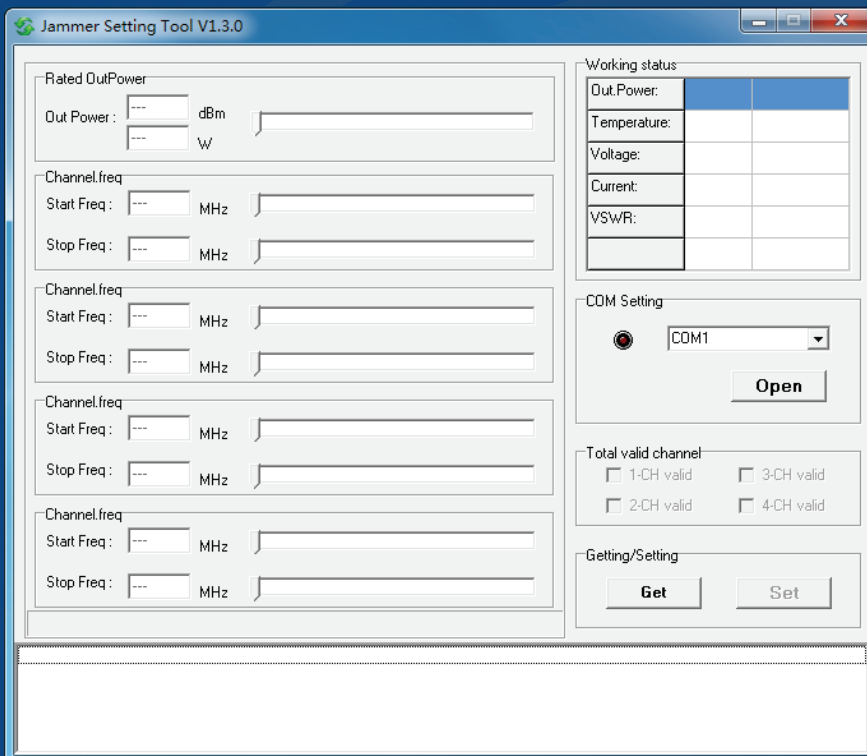
REMOTE CONTROLLER

WF-VIP JAM8 is design with a wired remote control unit, facilitating the operator to manage each module in any situation. This remote control unit can also display both internal and external battery level as well as built-in power supplies' working status.



DDS MODULE SOFTWARE INTERFACE

DDS software interface is quite simply. The operators just move the mouse and then he can set up working frequency bands and output power of the modules. Each module can be up to 4 channels output at most.



BIGGEST ADVANTAGE OF APPLICATION

WF-VIP JAM8 can be portable and vehicle mounted, which it's the biggest advantage in the application. Two units of **WF-VIP JAM8** can combine full frequency bands installed in the vehicle, equipped with vehicle mount antennae as required.

BATTERY TECHNICAL PARAMETER

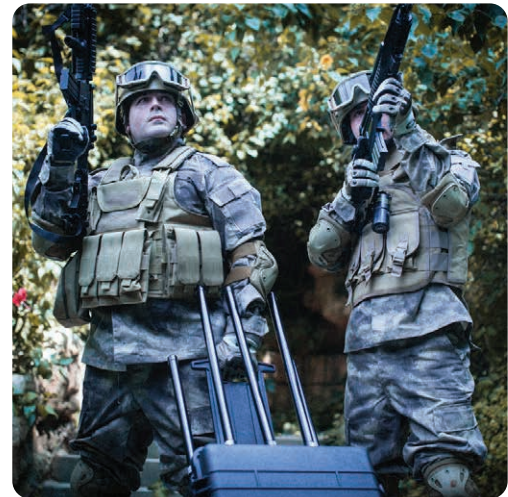
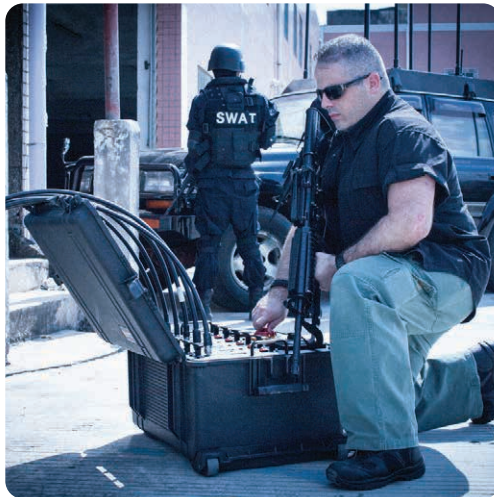
To warranty the safe operation of the equipment, Lithium Iron Phosphate battery has been selected. It is the most secure battery among the global large capacity batteries currently.

EXTERNAL BATTERY SPEC

Item	Model	LiFePo-2450
1	Voltage	27V
2	Internal Resistance	24m Ω
3	Size	430mm(L)*244mm(W)*341mm (H)
4	Recharge	0.2C
5	Discharge	1C
6	Weight	15.12Kg
7	DC Charger	INPUT:100-230AC, OUTPUT:29.2V/5A DC



Wireless Explosion Prevention Expert



WolvesFleet

We Save Lives and Prevent leakage of confidence

WOLVESFLEET TECHNOLOGY CO., LIMITED

Add: 4th Floor, R&D Building, Dacheng Industrial Park, Jihua Road, Buji, ShenZhen, China

Tel: 86-755-33620231 Fax: 86-755-33620232 www.wolvesfleet.com

All copyrights are reserved by WOLVESFLEET. Without permission, mustn't be Copied and reproduced. Once discovered, legal liability will be held.