

NUCTECH™ CX Series

Luggage & Cargo X-ray Inspection System



WWW.NUCTECH.COM EN

Technical Features

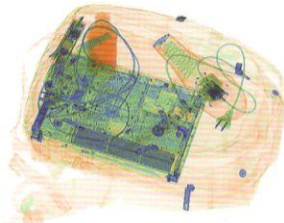
- Unsurpassed high image quality by optimized X-ray generator and high resolution detectors
- Efficient operating with ergonomically designed user interface
- Threat Image Projection (TIP) ready X-ray systems
- Optimized concept of operations, centralized image identify and storage capability implemented by various network applications
- Dual-view system facilitates identification of threats and contrabands by imaging in two perpendicular views

Summary

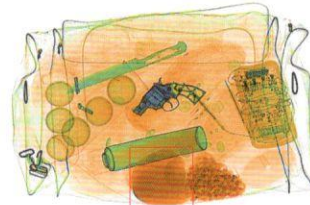
Nuctech Company Limited offers a series of X-ray inspection systems for luggage and cargo screening, with various tunnel sizes, dual-view and dual-tunnel options. Based on the best proven CX products platform, the CX Luggage & Cargo X-ray Inspection System has fully inherited the world-leading image performance, ergonomic user interface, advanced imaging enhancing algorithms, powerful functions and network applications, as well as high reliability and safety.

With unparalleled high image quality and advanced dual-energy material classification technology, the CX Luggage & Cargo X-ray Inspection System can completely meet all security and customs screening demands at airports, rail transportation stations, ports, critical infrastructures, and big events, etc.

NUCTECH™ CX Series Luggage & Cargo X-ray Inspection System



Advanced material classification:
Orange for organic, blue for metal
and green for mixed material



Automatic detection and
alarm of contrabands

Technical Data

General Specifications

Technical Principle	Dual-energy X-ray Imaging
Image Enhancement	Color/BW, negative, high/low penetration, organic /inorganic stripping, general enhancement and multi-absorptivity, etc.
Image Zoom	Stepwise/stepless zoom, up to 32 times enlargement
Image Recall	All preceding images recallable
Explosives & Narcotics Detection	Explosives & narcotics alarm and highlight according to atomic number signature
High Density Region Alarm	Impenetrable region alarm and highlight, for possible concealing of threats and contrabands
Threat Image Projection	Inserting fictional, but realistic images of threat items into baggage during screening operation, for maintenance of vigilance, as well as training and assessment of image identification capability
Image Archive	Up to 50,000 images stored automatically, enable transferring to USB disk, and converting to JPG, BMP and other general formats
Miscellaneous Functions	Time/date display, counters, user management, system-on/X-ray-on timers, power on self-test, built-in diagnostic facilities, dual-direction scanning, system log, system standby and stimulant training, etc.
Network Applications	Multiple remote applications available based on Ethernet LAN and windows platform, such as image centralized storage and identify, recheck workstation, and network TIP, etc.
Radiation Safety	Less than 1μGy/h (5cm from the housing), complying with all published international radiation safety and health standards
Film Safety	Guaranteed for high speed film up to ASA/ISO1600 (33DIN)

Products

	CX8065TI	CX8065D	CX10080T	CX100100TI	CX100100BI	CX100100D (Dual-view)
Tunnel Dimensions (W×H)	810mm ×655mm	810mm ×655mm	1010mm ×805mm	1010mm ×1005mm	1010mm ×1005mm	1010mm ×1005mm
Load Capacity	200kg	200kg	200kg	200kg	200kg	200kg
Conveyor Height	300mm	300mm	300mm	300mm	700mm	300mm
Conveyor Speed	0.2m/s	0.2m/s	0.2m/s	0.2m/s	0.2m/s	0.2m/s
Wire Resolution	38AWG	38AWG	38AWG	38AWG	38AWG	38AWG
Steel Penetration	35mm	35mm	35mm	35mm	35mm	35mm
Dimensions (L×W×H)	2950mm ×1100mm ×1565mm	3595mm ×1705mm ×1835mm	3126mm ×1300mm ×1650mm	3600mm ×1300mm ×1790mm	3555mm ×1352mm ×1955mm	3595mm ×1705mm ×1835mm
Weight	880kg	1450kg	980kg	1350kg	1450kg	1450kg
Power Consumption	1.0kVA	1.4kVA	1.0kVA	1.0kVA	1.0kVA	1.4kVA

Note: Image performance specifications are based on test piece complying with CAAC standard.

NUCTECH COMPANY LIMITED

Address: 2/F Block A, Tongfang Building,
Shuangqinglu, Haidian District,
Beijing 100084, P.R.China

Tel: +8610 50980999

Fax: +8610 62788896

NUCTECH HONG KONG COMPANY LIMITED

Address: Rooms 1403-04 on the 14th Floor
of China Resources Building, No.26
Harbour Road, Wanchai, Hong Kong

Tel: +852-27221828

Fax: +852-27221849

NUCTECH SYDNEY PTY LTD.

Address: Suite 404, 77 Dunning Avenue,
Rosebery NSW 2018 Australia

Tel: +612 96622307/96622317

Fax: +612 96622371

NUCTECH WARSAW COMPANY

LIMITED SP. Z O. O.

Address: ul. Pandy 18,02-202 Warsaw Poland

Tel: +48 22 6591545

Fax: +48 22 6581483

NUCTECH COMPANY LTD SUC.

ARGENTINA

Address: ECHEVERRIA 1515, 6A, BELGRANO,
CABA, CP1428, ARGENTINA

Tel: 0054-11-4782 2486

Fax: 0054-11-4785 0726-108

NUCTECH COMPANY LIMITED

(VENEZUELA BRANCH)

Address: Av. San Juan Bosco, Entre 2da y
raTransversal, Centro Altamira, Piso 14,
Ofc."C", Caracas, Venezuela

Mobile: +58412 321 7001

Tel: +58212 261 1050/261 9074

Fax: +58212 261 0618

NUCTECH MIDDLE EAST FZE

Address: Office 321, Building 5WA, Dubai Airport
Free Zone, P.O.Box 371820, Dubai, U.A.E

Tel: +971-4-2602308

Fax: +971-4-2602306

Email: cuiwei@nuctech.com

Nuctech South Africa (Pty) Ltd.

Address: Unit B13, 5 Galaxy Ave, Linbro Business
Park, Sandton, Johannesburg, South Africa

Tel: +27 (11) 6080480

Fax: +27(11) 6080525

NUCTECH DO BRASIL LTDA.

Address: Rua Bandeira Paulista Road No. 530,
9th floor, room No.91-94, Itaim Bibi
District, São Paulo/SP, Brasil

Tel: +55-11-30785449

Fax: +55 11 30785759

FT-EN-20160524

Copyright ©2016 NUCTECH COMPANY LIMITED, All Rights reserved.

Design and specifications are subject to change without notice.

Printed in CHINA, May 2016.



NUCTECH HAS BEEN AWARDED THE CERTIFICATE OF QUALITY MANAGEMENT SYSTEM (ISO9001:2008)
NUCTECH HAS BEEN AWARDED THE CERTIFICATE OF ENVIRONMENTAL MANAGEMENT SYSTEM (ISO14001:2004)
NUCTECH HAS BEEN AWARDED THE CERTIFICATE OF OCCUPATIONAL HEALTH AND SAFETY MANAGEMENT
SYSTEM (GB/T28001-2011)

