

# NUCTECH™ BXM1000

## Handheld Backscatter Screening System

### Introduction

Nuctech™ BXM1000 is a high-performance, handheld real time imaging system designed and made by NUCTECH. It employs the most advanced back scatter X-ray imaging technology. The handheld device allows operators to scan objects in hard-to-reach areas such as tires, vehicle doors (from inside), suspicious bags, mechanical parts, walls and furniture, etc.

Nuctech™ BXM1000 produces a real-time image of the scan target, highlighting organic materials that transmission X-ray systems may miss, such as explosives, currency, and drugs.

Nuctech™ BXM1000 provides user-friendly interface, strong detection ability, and safe operation environment. It is adaptable and suitable for highway checkpoints, boards, airports, customs, government facilities, etc.



### Technology Features

⦿ **Portable and flexible**

The system is a compact, single-side scanner that can be used to scan objects in hard-to-reach locations.

⦿ **Superior inspection capability**

Effective detection of weapons, IEDs, narcotics, detectaphones and other contrabands behind non-metal surfaces.

⦿ **Long operating time**

4 hours per battery charge (typical, based on 50% duty cycle).

⦿ **Practical system**

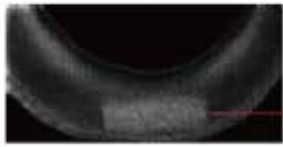
Provides high resolution and real time image.

⦿ **Radiation safety**

Safe for operators, bystanders, and the environment. The system's X-ray dose complies with the ANSI radiation safety standards.

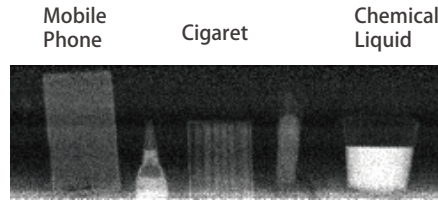


## Scan Image



Tires

Narcotics



Mobile Phone

Cigaret

Chemical Liquid

Flammable Liquid

Flour

Vehicle Door  
(From Inside)

## Technical Specifications

## Dimensions

### General Specification

Scan speed	120 mm/s
Scan time (max)	20s
Spatial resolution	3 mm
Imaging capabilities	IEDs, narcotics, liquids and other light or organic materials.
Applications	Boarders, airports, prisons, customs, government facilities, metros, etc.

### Image Processing System

Image acquisition mode	Real time
Image processing functions	Contrast, brightness, enhance, pseudo color, etc.
Image recall	Record image recallable

### Scanner Dimensions

System dimensions	200 mm (H) × 243 mm (W) × 301 mm (D)
Weight	4.3 kg (Tablet not included)

### Power Supply Data

Battery	100 Wh
Power consumption	33 W
Power supply (Charge)	100 - 240 VAC (-15% ~ +10%), Single Phase
Frequency (Charge)	50 / 60 Hz ± 3 Hz
Operating time	More than 4 hrs (50% duty cycle)

### Environmental Specification

Operating temperature	-10 °C ~ +40 °C
Storage temperature	-20 °C ~ +55 °C
Operating humidity	≤ 93%, non-condensing

Front View | Side View

