

NUCTECH™ CS0300T

Passenger Car Inspection System



WWW.NUCTECH.COM

EN

Technical Features

- Easy-analyzed Top-view scanning image
- High cost performance
- Innovative conveyor system drives the car move through the scanning tunnel smoothly with a constant speed
- 30 passenger vehicles/h in conveying scan mode
- Modularized design and excellent relocatability
- Reliable radiation safety facilities
- Customized hardware and software according to the customers' requirement
- Optional: Throughput of Drive Through mode* can be up to 150 passenger vehicles/h

Summary

NUCTECH™ CS0300T Passenger Car Inspection System is a new generation top-view portal inspection system.

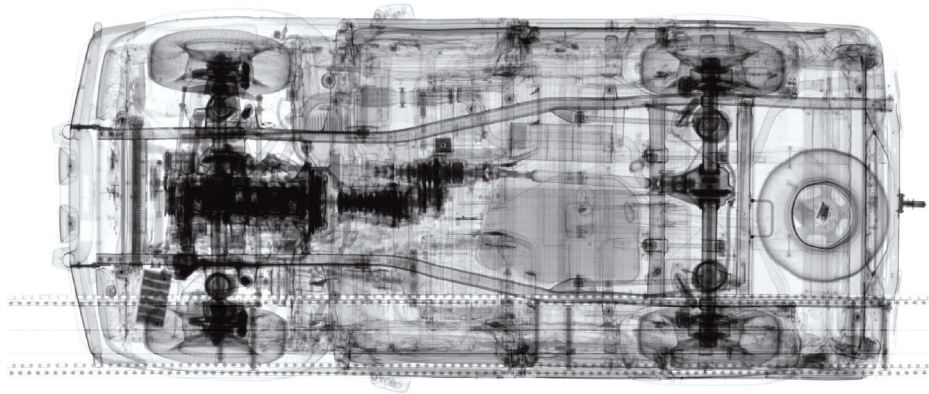
NUCTECH™ CS0300T is designed more suitable for inspecting the small vehicles at toll stations, government agencies, border crossings, important places, etc. High quality scanning images and powerful software tools can help inspectors to identify concealed contrabands or dangerous goods inside quickly without manually checking the vehicle.

NUCTECH™ CS0300T processes an innovative vehicle transport system in the scanning tunnel which can drive the vehicle through the scanning automatically.

Optional: Besides the conveying mode, NUCTECH™ CS0300T can be used in drive through mode* which realizes continuous scanning for passenger cars.

*CAUTION: Drive through mode will be provided as customer's requirements and it should be permitted by local laws/ regulations.

NUCTECH™ CS0300T Passenger Car Inspection System



Technical Data

General Specifications

Type of X-ray source	X-ray imaging system
Conveying scan mode	The conveyor drags the passenger vehicle through the scanning tunnel
Drive through mode*	The driver can drive the passenger car through the scanning tunnel directly and the system operates automatically
Standard operator number	2

System Specifications

Voltage	380 ±10%VAC, 3-phase 5-wire or configured according to customers' requirement
Frequency	50±1 Hz or configured according to customers' requirement
Operation temperature	-20°C ~ +50°C (optional -30°C ~ +50°C)
Storage temperature	-30°C ~ +55°C
Humidity range	0%-99%, non-condensing
Image analysis	Pseudo colour transformation; edge enhancement; filter; linear/logarithm transformation; histogram equalization; suspicious item mark and comments; multi image comparison; area calculation; user define macro; image format transformation, etc.
Zoom	1/4x, 1/2x, 1x, 2x, 4x
Image acquisition mode	Real-time, synchronized

Configurations

	Conveying scan mode	Drive through mode*
Nominal energy	300KeV	300KeV
Steel penetration	60mm	40mm
Absorbed dose by driver	N/A	≤ 0.25μSv/scan (typical: 0.1μSv)
Dim. of scanned vehicle	Width: 2.2m Height: 2.8m Length: 5.5m	Width: 2.2m Height: 2.8m Length: 5.5m
Scanning speed	0.2m/s	≤ 8km/h
Throughput	30units/h	150units/h

*CAUTION: Drive through mode will be provided as customer's requirements and it should be permitted by local laws/ regulations.

DY-EN-20150417

Copyright ©2015 NUCTECH COMPANY LIMITED, All Rights reserved.
Design and specifications are subject to change without notice.
Printed in CHINA, April 2015.



NUCTECH HAS BEEN AWARDED THE CERTIFICATE OF QUALITY MANAGEMENT SYSTEM (ISO9001:2008)
NUCTECH HAS BEEN AWARDED THE CERTIFICATE OF ENVIRONMENTAL MANAGEMENT SYSTEM (ISO14001:2004)
NUCTECH HAS BEEN AWARDED THE CERTIFICATE OF OCCUPATIONAL HEALTH AND SAFETY MANAGEMENT SYSTEM (GB/T28001-2011)

NUCTECH COMPANY LIMITED
Address: 2/F Block A, Tongfang Building,
Shuangqinglu, Haidian District,
Beijing 100084, P.R.China
Tel: +8610 50980999
Fax: +8610 62788896
Http: //www.nuctech.com

**NUCTECH HONG KONG
COMPANY LIMITED**
Address: Rooms 1403-04 on the 14th
Floor of China Resources Building,
No.26 Harbour Road, Wanchai,
Hong Kong
Tel: +852-27221828
Fax: +852-27221849

NUCTECH SYDNEY PTY LTD.
Address: Suite 404, 77 Dunning Avenue,
Rosebery NSW 2018 Australia
Tel: +612 96622307/96622317
Fax: +612 96622371

**NUCTECH WARSAW COMPANY
LIMITED SP. Z O. O.**
Address: ul. Pandy 18,
02-202 Warsaw Poland
Tel: +48 22 6591545
Fax: +48 22 6581483

**NUCTECH COMPANY LTD SUC.
ARGENTINA**
Address: ECHEVERRIA 1515,
6A, BELGRANO, CABA,
CP1428, ARGENTINA
Tel: 0054-11-4782 2486
Fax: 0054-11-4785 0726-108

**NUCTECH COMPANY LIMITED
(VENEZUELA BRANCH)**
Address: Av. San Juan Bosco, Entre 2da y 3ra
Transversal, Centro Altamira, Piso 14,
Ofc."C", Caracas, Venezuela
Mobile: +58412 321 7001
Tel: +58212 261 1050/261 9074
Fax: +58212 261 0618

 **威视**
NUCTECH