

NUCTECH™ CX100100TI X-RAY INSPECTION SYSTEM



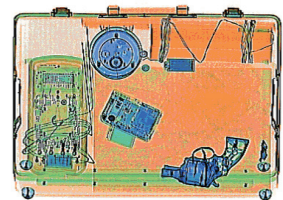
Introduction

NUCTECH™ CX100100TI X-ray Inspection System, NUCTECH's new generation product for inspection of luggage, baggage and small cargoes, is an advanced dual-energy X-ray security inspection system with tunnel dimensions of 1010mm width and 1005mm height. It stands out with more modern and ergonomic design for efficient and professional X-ray screening. It is perfectly suitable for baggage inspection in airports, railway stations, customs, ports, and stadiums, etc.

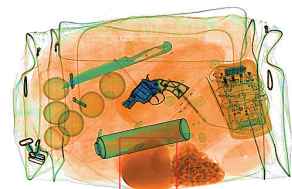
CX100100TI combined with unsurpassed operation ergonomics, reliability and safety can provide excellent image quality and advanced material classification. CX100100TI can also be adjusted to enhanced option to meet situations that require higher image quality. CX100100TI offers explosive and drug auto detection as optional.

Technology Features

- High image quality with wire resolution of 38mm AWG and steel penetration up to 34mm steel
- X-ray leakage around the equipment is close to natural background level, which meets all published international health and safety standards and ensures the radiation safety of operators as well as the public
- Automatic detection and alarm of explosives and drugs
- TIP(Threat Image Projection) provides a practical solution for operator performance monitoring and training
- Support stepwise, continuous and magnifier functions to enlarge images
- Images can be saved as general image format, such as BMP, JPG, GIF and TIFF, and be transferred to USB storage devices
- Ergonomic keyboard and user interface design ensure the efficiency and professional of the X-ray screening operation
- Modular design and construction combined with full built-in diagnostic facility guarantee the efficiency of equipment maintenance



Excellent image quality: Orange for organic, blue for metal and green for mixed material



Automatic detection of drugs

Technical Specifications

General Specification

Tunnel Dimensions	1010mm(W) × 1005mm(H)
Conveyor Speed	0.20m/s
Conveyor Height	300mm
Max. Load	200Kg

Image Performance

Wire Resolution	0.1mm(38AWG)
Steel Penetration	34mm
Display Resolution	1280 × 1024

Image Processing System

Image Enhancement	Color/BW, negative, high/low penetration, organic /inorganic stripping, general enhancement, multi-absorptivity, and suspect material enhancement, etc.
Material Classification	According to atomic number signatures
ROI & Zoom	Step/stepless zoom, up to 32 times enlargement
Image Recall	Preceding images recallable
Image Storage Capability	Up to 50,000

Miscellaneous Functions

Standard Functions	Time/date display, counters, user management, system-on/X-ray-on timers, power on self test, built-in diagnostic facilities, dual-direction scanning, system log, system standby and training, etc.
Optional Functions	Explosives/narcotics detections, high-density area alert, threat image projection (TIP)

Health and Safety

X-ray Leakage	Less than 1μGy/h (5cm from the housing) , complies with all published international standards
Film Safety	Guaranteed for high speed film up to ASA/ISO1600 (33DIN)

Installation Data

Dimensions	3600mm(L) × 1300mm(W) × 1790mm(H)
Weight	1200Kg
Storage Temperature / Humidity	-40°C ~ +60°C / 5% ~ 95% (non-condensing)
Operating Temperature / Humidity	0°C ~ +40°C / 5% ~ 95% (non-condensing)
Power Supply	220VAC/110VAC (-15%~ +10%), 50 Hz/60Hz ±3Hz
Power Consumption	1.0KVA

Note: Image performance specifications are based on test piece complying with GB 15208.2-2006.



NUCTECH COMPANY LIMITED

Address: 2/F Block A, Tongfang Building,
Shuangqinglu, Haidian District,
Beijing 100084, P.R.China

Tel: +8610 62780909
Fax: +8610 62788896/62784270
Http://www.nuctech.com

NUCTECH SYDNEY PTY LTD.

Address: Suite 4.04, 77 Dunning Avenue,
Rosebery NSW 2018 Australia

Tel: +612 96622307/96622317
Fax: +612 96622371

NUCTECH HONG KONG COMPANY LTD.

Address: Room 1602, The Metropolis Tower,
10 Metropolis Drive, Hungghom
Kowloon Hong Kong

Tel: +852 27221828
Fax: +852 27221849

NUCTECH WARSAW COMPANY LIMITED SPOTKA Z.O.O.

Address: ul. Pandy 18
02-202 Warsaw Poland

Tel: +4822 6591545
Fax: +4822 6581483

NUCTECH COMPANY LTD.

SUCURSAL ARGENTINA

Address: Juana Azurduy 1520, Piso 4
Oficina C, Buenos Aires,
Argentina

Tel: +5411 47045924
Fax: +5411 47045459
Mobile: +54911 66630041/65314065

NUCTECH COMPANY LTD.

SUCURSAL VENEZUELA

RIF: J-30949364-7

Address: Av. Francisco de Miranda, Centro
Plaza, Torre A Piso 19, Oficina 19-C-D,
Caracas, Venezuela

Tel: +58212 2852594/2854194
Fax: +58212 2854194
Mobile: +58412 3217001

