



MT1213DE
Mobile Container / Vehicle Inspection System

EN

NUCTECH™ MT1213DE

Mobile Container / Vehicle Inspection System

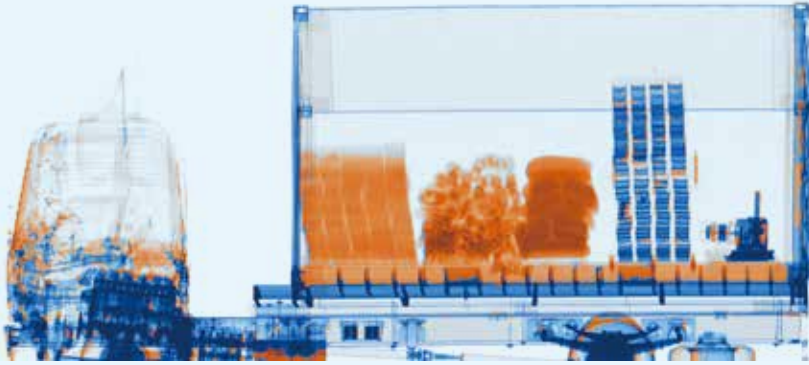
Summary

The NUCTECH™ MT1213DE is an innovative mobile X-ray inspection system. Adopts the advanced Interlaced Dual-energy (IDE) linear accelerator (LINAC) as the radiation source, the MT1213DE can provide excellent screening features such as organic/inorganic material discrimination, fast-scan and radioactivity monitoring.

The MT1213DE combines elegant design and modern appearance with flexible maneuverability and rapid deployment. It can be driven independently during site transfer transportation and be deployed for use within 15 minutes. Therefore, it provides customers the best mobility and no doubt enhances the efficiency for detection illegal contraband, prohibited products and undeclared goods.

Technical Features

- Unique mobile security solution with excellent flexibility and adaptability
- Fast-scan technology for optional Drive-Through (DT) mode
- High throughput of 20~25 vehicles/h in standard scan mode and up to 100 vehicles/h in DT mode
- Fully autonomous system without any additional infrastructure
- Function well in harsh weather conditions such as extremely cold, hot, windy, rainy or snowy
- Advanced Interlaced Dual Energy (IDE) technology for material discrimination and high penetration



MT1213DE
Mobile Container / Vehicle Inspection System

Technical Data

Type of X-ray source	Interlaced Dual-energy Electron Linear Accelerator
X-ray energy	6/3 MeV
Material discrimination function	Organic material and inorganic material can be distinguished and marked by given colors
Penetration	320mm of steel
Max. dim. of scanned object	Length: 18.0m Width: 2.6m Height: 4.6m (The length can be expandable on request of customers)
Throughput	Standard mode: 20~25 units of 40ft container vehicles per hour Drive-through mode: 100 units of 40ft container vehicles per hour
Scanning speed	Typical 0.4m/s 5km/h (DT mode)
Scanning method	Standard mode: Scanned objects keep still and the scanning vehicle moves Driver-through mode: Scanning vehicle keeps still and the scanned objects pass through.
Standard operator number	2 (one system control operator and one image inspector)
Radiation protection area	40m (L) x 30m (W) (Standard mode, for 18m scanning length) 25m (L) x 40m (W) (Drive-through mode, for 18m scanning length)
Dose rate on the system boundary	$\leq 2.5 \mu\text{Sv/h}$
Absorbed dose to cargo per scan	$\leq 10 \mu\text{Sv}$
Occupational annual effective dose	$\leq 2\text{mSv}$
Public annual effective dose	$\leq 0.2\text{mSv}$
Mobility	100%
Setup time	≤ 30 minutes
Max. driving speed at transportation status	90km/h
G.V.W.	$\leq 25,000\text{kg}$
Vehicle chassis	Volvo FM series
Power capacity	$\leq 40\text{kVA}$
Voltage	380 $\pm 10\%$ VAC, 3-phase 5-wire or configured according to customers' requirement.
Frequency	50 ± 1 Hz or configured according to customers' requirement
Operating temperature	-15°C ~ +45°C (optional -30°C ~ +45°C or -15°C ~ +55°C)
Storage temperature	-30°C ~ +55°C
Humidity range	0 ~ 99%, non-condensing
Image acquisition mode	Real-time, synchronized
Zoom	1/4x, 1/2x, 1x, 2x, 4x
Image analysis	Pseudo colour transformation; edge enhancement; filter; linear/logarithm transformation; histogram equalization; suspicious item mark and comments; multi image comparison; area calculation; user define macro; image format transformation, etc.
Options	Support EDI and Network Interfaces Radioactivity monitor (RM)

NUCTECH COMPANY LIMITED

Address: 2/F Block A, Tongfang Building,
Shuangqinglu, Haidian District,
Beijing 100084, P.R. China
Tel: +8610 50980999
Fax: +8610 62788896
Http: //www.nuctech.com

NUCTECH HONG KONG COMPANY LIMITED

Address: Rooms 1403-04 on the 14th
Floor of China Resources Building,
No.26 Harbour Road, Wanchai,
Hong Kong
Tel: +852-27221828
Fax: +852-27221849

NUCTECH SYDNEY PTY LTD.

Address: Suite 404, 77 Dunning Avenue,
Rosebery NSW 2018 Australia
Tel: +612 96622307/96622317
Fax: +612 96622371

NUCTECH WARSAW COMPANY LIMITED SP. Z O. O.

Address: ul. Pandy 18,
02-202 Warsaw Poland
Tel: +48 22 6591545
Fax: +48 22 6581483

NUCTECH COMPANY LTD SUC. ARGENTINA

Address: ECHEVERRIA 1515,
6A BELGRANO, CABA,
CP1428. ARGENTINA
Tel: 0054-11-4782 2486
Fax: 0054-11-4785 0726-108

NUCTECH COMPANY LIMITED (VENEZUELA BRANCH)

Address: Av. San Juan Bosco, Entre 2da y 3ra
Transversal, Centro Altamira, Piso 14,
Ofc."C", Caracas, Venezuela
Mobile: +58412 321 7001
Tel: +58212 261 1050/261 9074
Fax: +58212 261 0618

DY-EN-20150113

Copyright © 2015 NUCTECH COMPANY LIMITED, All Rights reserved.
Design and specifications are subject to change without notice.
Printed in CHINA, January 2015.



NUCTECH HAS BEEN AWARDED THE CERTIFICATE OF QUALITY MANAGEMENT SYSTEM (ISO9001:2008)
NUCTECH HAS BEEN AWARDED THE CERTIFICATE OF ENVIRONMENTAL MANAGEMENT SYSTEM (ISO14001:2004)
NUCTECH HAS BEEN AWARDED THE CERTIFICATE OF OCCUPATIONAL HEALTH AND SAFETY MANAGEMENT SYSTEM (GB/T28001-2011)

 **威视**
NUCTECH