



WolvesFleet

We Save Lives and Prevent leakage of confidence



HIGH-POWER PORTABLE **DDS** MULTI-BAND JAMMING SYSTEM

Model No. WF-VIP JAM5

INTRODUCTION

Detonation and confidence leaking, resulting from Road-side Remote Improvised Explosive Device (RCIED) have been serious threat for the lives' safety of the bomb disposal troop and law enforcement quality of anti-terrorism unit. To ensure the smooth process of law enforcement task and people's lives safety have been the tremendous challenge and task in many parts of the world.

Wolvesfleet solutions—**WF-VIP JAM5**, High Power DDS Convoy Jamming System, implementing the most effective and reliable RF jamming technology and equipped with a fully-integrated broadband jamming system.

WF-VIP JAM5 can cover, continuously and simultaneously, all the RF communication Frequencies 20MHz ~3600MHz.

WF-VIP JAM5, full portable multi band DDS Jamming system, is designed with a ruggedized trolley type case ,light weight, high mobility and reliance. This device is configured with 5 different jamming modules. The jamming frequency can be more than 10 Bands. Jamming frequency module can be up to 250-300watt output power. The **WF-VIP JAM5** is especially easy to install and operate: simply attach the selected antennas and activate the desired frequency bands. All operating controls and LED indicators are externally installed. The unit operates from internal battery, or can draw power from AC mains or a suitable DC power source.

The general design of the system meets military requirements as well as international quality standards and requirements. Our industrial in-house quality management system guarantees highest quality standards in terms of performance, reliably and long-life cycles.

Based on our general design, we can further customize our systems to client-specified scenarios both for military and civil applications in order to provide the best individual solution.





ADVANTAGES OF THE WF-VIP JAM5

- ▶ High-power portable multi-band jammer.
- ▶ Field programmability for rapid adjustment frequency with output Watt.
- ▶ Modular construction for easy maintenance, repair and upgrade.
- ▶ Jammer up to five different jamming modules simultaneously, and cover up to 10 different frequency bands.
- ▶ Each module with LED display to show its working frequency, output power and etc.
- ▶ 250-300 watts total RF output power.
- ▶ Equipped with a remote control unit. The operator can ON/OFF each module through the wired remote controller.
- ▶ Fully portable trolley-type case.
- ▶ Internal battery, AC mains or DC power.
- ▶ External LED display to indicate the battery level.
- ▶ Designed with external backup battery input, adapted to external battery. Facilitating to change the battery timely for field use.



APPLICATION

Bomb disposal squads, VIP protection, Special Police (S.W.A.T), military security forces, bomb squads, anti-terror units, anti-drug units, border control units, checkpoint personnel, these types of law enforcement personnel who benefit greatly from the deployment of any of these best-in-class portable RF jamming solutions.

They can conduct the law enforcement process more effectively to reduce the chance that the criminals leak the information.



TECHNICAL SPECIFICATION

Based on its modular design and configuration our digital jammer can be easily operated, upgraded, serviced, repaired and adapted to its required use.

Digital Jammer modules can be changed easily and quickly just as changing the mobile phone battery. Different jamming frequency bands can be configured as the customers required immediately.

Model No.WF-VIP JAM5 L		
RF Frequency Band(MHz)	Application	RF Output Power (Watt)
20-100	HF, Radio Control Toys; Car Alarms	50
135-175/240-280	Walky-talky (VHF)	50
310-400	Remote Control ,Walky-talky (UHF300)	50
400-470	Cellular NMT;Walky-Talky (UHF400); Cellular CDMA450;Car Alarm; Remote Control	50
850-895;/925-960;725-775	Cellular CDMA800/GSM900, UHF800;LTE4G	50
TOTAL RF POWER		250Watt

Model No.WF-VIP JAM5 M		
RF Frequency Band(MHz)	Application	RF Output Power (Watt)
1520-1580	GPS & Satellite; Thuraya; Iridium; Odyssey; GlobalStar; Inmarsat; Aces; Elipso	40
1805-1880/1920-1990	Cellular HGSM1800,GSM1900/ PHS	80
2110-2170	Cellular UMTS / WCDMA,CDMA2000 (3G)	80
2400-2500/2620-2690	WLAN & Bluetooth & WiFi.2.4G, LTE,4G	40
3400-3600	WiMax;Bluetooth	10
TOTAL RF POWER		250Watt

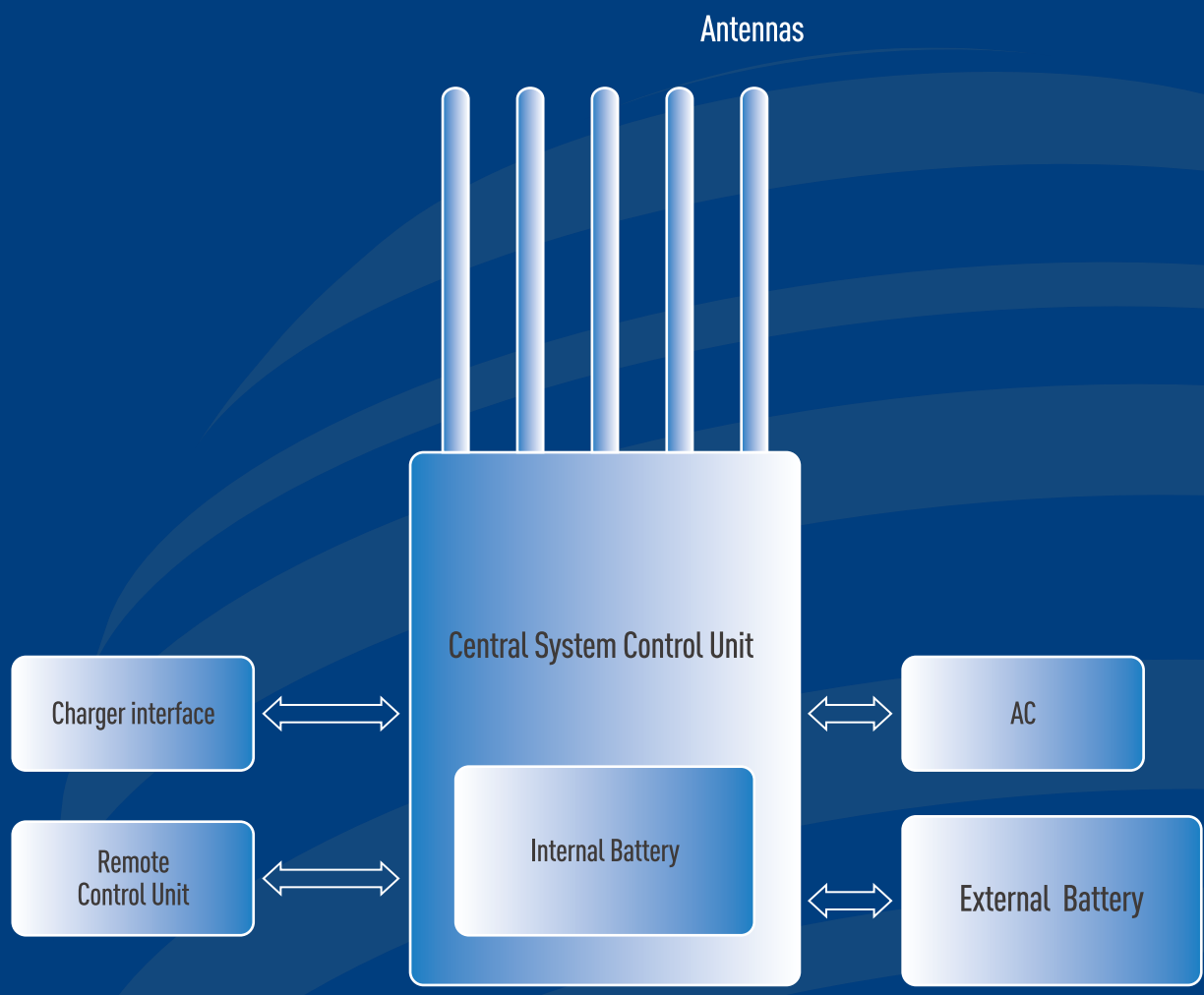
Model No.WF-VIP JAM5 H		
RF Frequency Band(MHz)	Application	RF Output Power (Watt)
725-775	LTE700,4G	50
850-895;925-960	Cellular CDMA800/GSM900	50
1805-1880/1920-1990	Cellular HGSM1800,GSM1900/ PHS	50
2110-2170	Cellular UMTS / WCDMA,CDMA2000 (3G)	50
2620-2690	LTE2600,4G	50
TOTAL RF POWER		250Watt

Frequency Range	20-3600MHz
Total RF Power	250Watt, Max: 300Watt
Jammer Module Number	5
Channel Frequency Number	15Bands, Max: 20Bands
Cooling System	Systematic Smart Cooling System
System Protection	VSWR, Over-voltage, Over-current,
Jamming Source	Digital Signal Source Synthesize Technology, Adjust Frequency and Output Watt
Remote Control	Full System Operation Control With Battery Led display
Antenna Type	High Gain Omnidirectional Antennas
Number of Antennas	5
Built in Battery	35AH/24-28VDC
Jammer Module	Each Jammer module with antenna can be used as a single jammer. All modules are controlled separately.
Jammer Size	56.5 x 46 x 27cm
Jamming System Weight	Approx.35kg
Operating Temperature Range	-35°C~+80°C
Operating Humidity	Up to 80%



EQUIPMENT STRUCTURE AND OPERATING PRINCIPLES

SYSTEM DIAGRAM

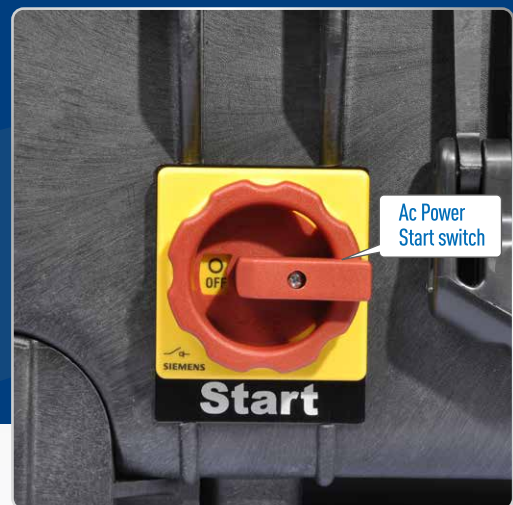
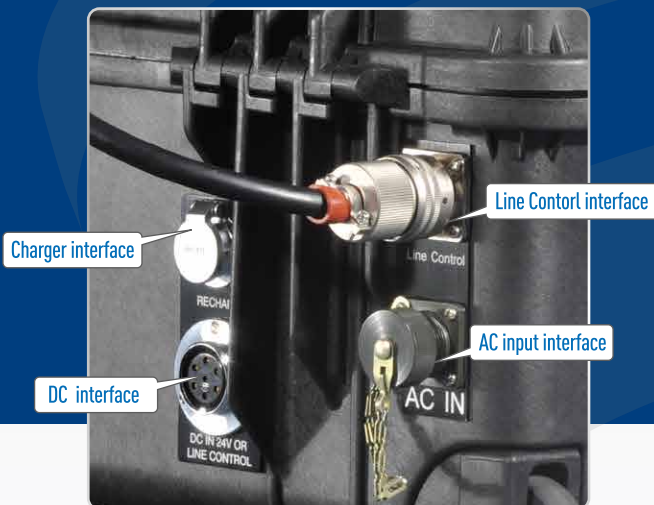


MACHINE BODY

WF-VIP JAM5 adopts DDS technology, fully sweeping the jamming frequency bands so that it results in a more efficient jamming and bigger shielding coverage. Enclosed with American Mil-spec Case, dustproof, shockproof and drop-resistance.

Modular design makes easier maintenance. Damaged modular can be took off and changed easily. It will not interfere the other modules' normal working.





CHARACTERISTIC OF JAMMER MODULES

Each module is designed with three indication lights, to show Power, Run and Alarm (Antennae VSWR feedback status).

Each module is with LED display to indicate the working frequency, output power and etc.

Each Module is designed with 232 Com Port and USB cable, connected to the computer. Frequency bands and output power can be adjusted, and the working status can be monitored through this software.



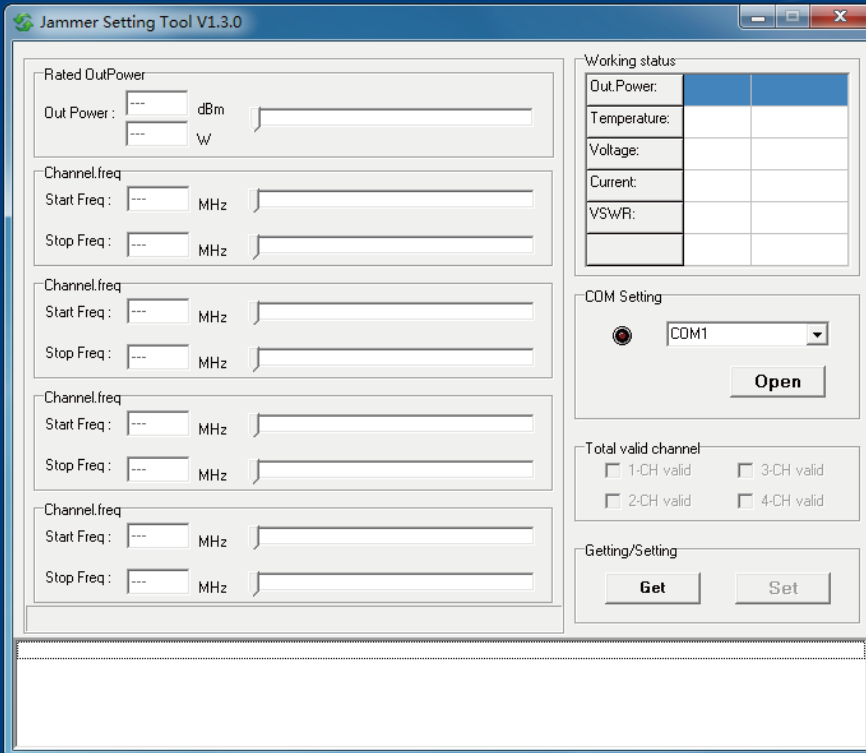
REMOTE CONTROLLER

WF-VIP JAM5 is design with a wired remote control unit, facilitating the operator to manage each module in any situation. This remote control unit can also display both internal and external battery level as well as built-in power supplies' working status.



DDS MODULE SOFTWARE INTERFACE

DDS software interface is quite simply. The operators just move the mouse and then he can set up working frequency bands and output power of the modules. Each module can be up to 4 channels output at most.



BIGGEST ADVANTAGE OF APPLICATION

WF-VIP JAM5 can be portable and vehicle mounted, which it's biggest advantage in the application. Two units of **WF-VIP JAM5** can combine full frequency bands installed in the vehicle, equipped with vehicle mount antennae as required.



BATTERY TECHNICAL PARAMETER

To warranty the safe operation of the equipment, Lithium Iron Phosphate battery has been selected. It is the most secure battery among the global large capacity batteries currently.

INTERNAL BATTERY SPEC

Item	Model	RFE-8F35
1	Voltage	27V
2	Internal Resistance	24m Ω
3	Size	260mm(L)* 125mm*(W)168mm (H)
4	Recharge	0.2C
5	Discharge	1C
6	Weight	8Kg
7	DC Charger	INPUT:100-230AC, OUTPUT:29.2V/5A DC

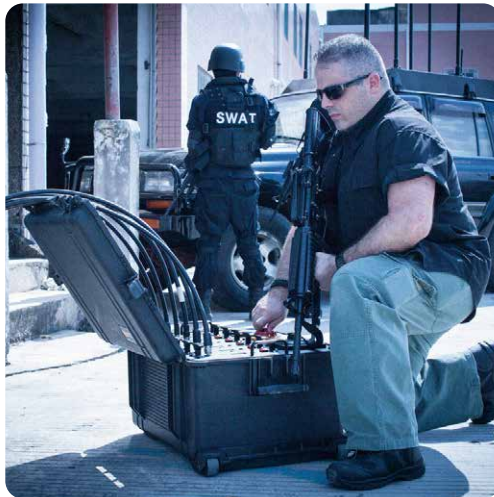


EXTERNAL BATTERY SPEC

Item	Model	RFE-8F35
1	Voltage	27V
2	Internal Resistance	24m Ω
3	Size	260mm(L)* 125mm*(W)168mm (H)
4	Recharge	0.2C
5	Discharge	1C
6	Weight	8Kg
7	DC Charger	INPUT:100-230AC, OUTPUT:29.2V/5A DC



Wireless Explosion Prevention Expert



WolvesFleet

We Save Lives and Prevent leakage of confidence

WOLVESFLEET TECHNOLOGY CO., LIMITED

Add: 4th Floor, R&D Building, Dacheng Industrial Park, Jihua Road, Buji, ShenZhen, China

Tel: 86-755-33620231 Fax: 86-755-33620232 www.wolvesfleet.com

All copyrights are reserved by WOLVESFLEET. Without permission, mustn't be Copied and reproduced. Once discovered, legal liability will be held.